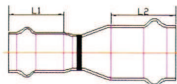


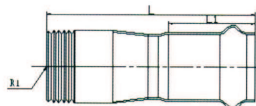
雙壓著另件

RS 異徑接頭



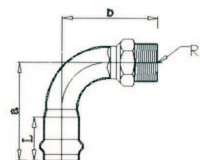
稱呼	規格	L	L1	L2	單價
20x13	22.22x15.88	75	25	29	63
25x20	28.58x22.22	79	29	32	96
25x13	28.58x15.88	89	25	32	105
30x25	34.0x28.58	112	32	48	170
30x20	34.0x22.22	107	29	48	182
30x13	34.0x15.88	119	25	48	183
40x30	42.7x34.0	132	48	58	224
40x25	42.7x28.58	123	32	58	228
40x20	42.7x22.22	132	29	58	232
40x13	42.7x15.88	139	25	58	246
50x40	48.6x42.7	145	58	65	271
50x30	48.6x34.0	150	48	65	288
50x25	48.6x28.58	140	32	65	291
50x20	48.6x22.22	149	29	65	365
50x13	48.6x15.88	156	25	65	372
60x50	60.5x48.6	186	65	65	371
60x40	60.5x42.7	166	58	80	420
60x30	60.5x34.0	169	48	80	468
60x25	60.5x28.58	160	32	80	522
60x20	60.5x22.22	169	29	80	526
60x13	60.5x15.88	176	25	80	688
75x50	76.3x48.6	218	65	85	1608
75x40	76.3x42.7	225	58	85	1582
90x75	89.1x76.2	268	85	95	2034
90x50	89.1x48.6	218	65	95	1997
90x40	89.1x42.7	225	58	95	1821

AS-M 外牙接頭



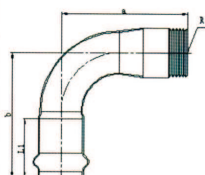
稱呼	規格	L	L1	單價
13	15.88x1/2"	62	25	102
20	22.22x3/4"	69	29	140
25	28.58x1"	78	32	182
30	34.0x1-1/4"	109	48	235
40	42.7x1-1/2"	123	58	356
50	48.6x2"	137	65	414
60	60.5x2-1/2"	163	80	599

AE-M 外牙彎頭



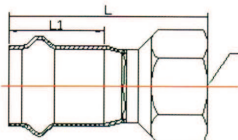
稱呼	規格	L	a	b	單價
13	15.88x1/2"	25	55	60	105
20	22.22x3/4"	29	66	70	150
25	28.58x1"	32	78	82	195

AE-M 外牙彎頭



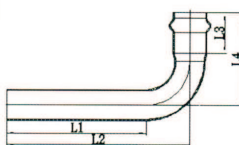
稱呼	規格	L1	a	b	單價
30	34.0x1-1/4"	48	105	100	290
40	42.7x1-1/2"	58	114	124	371
50	48.6x2"	65	126	138	474
60	60.5x2-1/2"	80	172	136	735

SS 水栓接頭



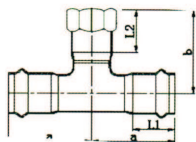
稱呼	規格	L	L1	單價
13	15.88x1/2"	53	25	102
20	22.22x3/4"	61	29	140
25	28.58x1"	67	32	182
30	34.0x1 1/4"	90	48	235
40	42.7x1 1/2"	100	58	323
50	48.6x2"	113	65	403
60	60.5x2 1/2"	142	80	598

90° SE 單面加長彎頭



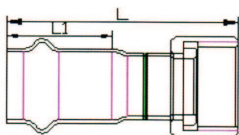
稱呼	規格	L1	L2	L3	L4	單價
13	15.88	100	119	25	55	48
20	22.22	100	123	29	66	68
25	28.58	100	131	32	78	80
30	34.0	200	216	48	105	196
40	42.7	200	220	58	124	230
50	48.6	200	224	65	138	358
60	60.5	200	232	80	142	440

ST 異徑水栓三通



稱呼	規格	L1	a	b	單價
13x1/2"	15.88x1/2"	25	25	32	152
20x1/2"	22.22x1/2"	61	29	36	182
20x3/4"	22.22x3/4"	67	32	39	206
25x1/2"	28.58x1/2"	90	48	39	215
25x3/4"	28.58x3/4"	100	58	45	238
25x1"	28.58x1"	113	65		271
30x1/2"	34.0x1/2"	142	80	46	634
40x1/2"	42.7x1/2"	142	80	49	650
50x1/2"	48.6x1/2"	142	80	39	758

HF 活動閥接



稱呼	規格	L	L1	單價
13	15.88x1/2"	55	25	158
20	22.22x3/4"	63	29	240
25	28.58x1"	75	32	320
30	34.0x1-1/4"	95	48	503
40	42.7x1-1/2"	104	58	734
50	48.6x2"	112	65	1005
60	60.5x2-1/2"	137	80	1407